



Leigh Academy
Tonbridge

Year 12 Curriculum Information Evening

Results 2024 - GCSEs

	2023 National averages	2019 (last 'normal' results before Covid pandemic)	2023	2024
A8	46.3	37.1	43.8	45.44
P8	0	-0.79	+0.16	+0.09
English / Maths 4+	65	51	67	72
English / Maths 5+	45	23	42	45
EBACC % entered	39	0	3	83
EBACC % successful (4+)	24	0	1	43
EBACC average points score	4.05	0	3.44	4.36

Results 2024 - Post 16

- Average grade of C-
- All students going on to the destination of their choice

Our students are moving on to a range of exciting destinations, courses and careers. These include:

Investment banking at the University of Exeter;

Sports and exercise science at the University of Brighton;

Media production at the University of Bournemouth;

Computer science at the University of Brighton and at Middlesex University London; and

Film studies at the University of Kent





DELPHI
College



LYCEUM
College



OLYMPIA
College



The Sixth Form Team:

Head of Sixth Form/Director of Key Stage 5 Progress - Mrs Hubbard

13O1 Tutor - Mrs Brooks

12D1 Tutor - Mr Arnold

12L1 Tutor - Miss Wallace

12O1 Tutor - Miss Clout

On site counsellor

Rae.Ni-Bhreacain@place2be.org.uk



Safeguarding



Ms Nugent
Delphi SSM - Key Stage 3



Mrs Christmas
Delphi SSM - Key Stage 4



Ms Brewer
Lyceum SSM - Key Stage 3



Ms Finch
Lyceum SSM - Key Stage 4



Mrs Concannon
Olympia SSM - Key Stage 3



Ms Molyneux
Olympia SSM - Key Stage 4

Mr Bidder
DDSL
Assistant Head of
Olympia College



Mr Fuller
Designated Safeguarding Lead
Head of Olympia College



Mrs B Green
Pastoral KS5



Tutor Time

Tutor group	Monday	Tuesday	Wednesday	Thursday	Friday
12D	<p>What's in the news?</p> <p>Wellbeing check in - personal and academic targets.</p>	<p>Year 12 assembly with Delphi college</p>		<p>PHSE</p> <p>📺 Year 12</p>	<p>Aspire Careers/Uni frog</p>
12O	<p>What's in the news?</p> <p>Wellbeing check in - personal and academic targets</p>	<p>PHSE</p> <p>📺 Year 12</p>		<p>Year 12 assembly with Lyceum college</p>	<p>Aspire Careers/Uni frog</p>
12L	<p>What's in the news?</p> <p>Wellbeing check in - personal and academic targets</p>	<p>PHSE</p> <p>📺 Year 12</p>		<p>Year 12 assembly with Lyceum college</p>	<p>Aspire Careers/Uni frog</p>
13O	<p>Wellbeing check in - personal and academic targets</p>	<p>PHSE</p> <p>📺 PSHCE Cur...</p>	<p>Year 13 assembly with Olympia college</p>	<p>What's in the news?</p>	<p>Aspire Careers/Uni frog</p>



Homework/Independent Study

- Published and shared on Bromcom Student Portal (MCAS for parents).
- Homework has already been set - they have plenty to be getting on with!
- Incomplete homework will result in a detention.
- The library is open for homework from 8:15-8:40 every morning and until 4:15 on Monday, Tuesday, Friday
- Apart from a break and lunch, students should be working when in the common room (Study Periods)
- A SILENT study room is also available in the sixth form block for SILENT study.



How can parents/carers support at home?

- Study guide to follow with advice for students and parents - Wednesday study days.
- Reinforce the importance of independent study
- Support students to find a quiet working space
- Support with organising their time effectively and get in to good habits
- Contact the tutor if you have any concerns or questions

Chromebook Expectations

1. Educational use only.
2. Your responsibility to look after your Chromebook. Keep it in a protective case.
3. You are the only authorised user of your assigned Chromebook.
4. Do not EAT or DRINK near your Chromebook.
5. Chromebooks **must** come to school fully charged.
6. Chromebook usage is monitored both in school and out.
7. Deliberate damage to Chromebooks will be treated as vandalism and sanctioned accordingly (detention, isolation, suspension, fines).



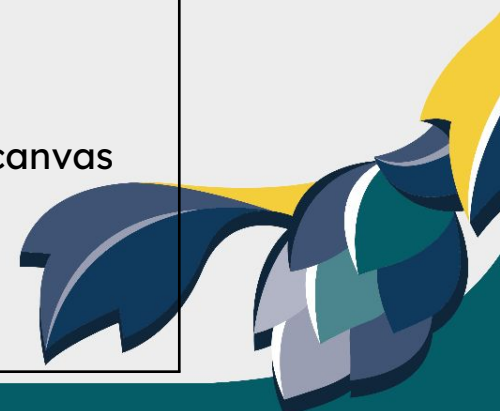
Dress code - Boys

Expected	Example of unacceptable dress
<p>Lanyard</p> <p>Smart collared shirt with tie</p> <p>Tailored long trousers</p> <p>Dark leather shoes</p> <p>Tailored jacket (optional)</p> <p>Cardigan or jumper (optional)</p>	<p>Any clothes with large obvious logos</p> <p>T-shirt</p> <p>Cargo/combat trousers</p> <p>Trousers with additional external pockets</p> <p>Sports wear</p> <p>Shorts or three quarter length trousers, jeans/denim of any type</p> <p>Trainers (including Vans/Converse), canvas shoes</p> <p>Hooded tops</p> <p>No “beachwear” including flip-flops</p> <p>No “ugg” style boots</p>



Dress code - Girls

Expected	Example of unacceptable dress
<p>Lanyard Smart shirt/blouse Plain/patterned top Tailored long trousers or skirt Smart dress Dark leather shoes Tailored jacket (optional) Cardigan or jumper (optional)</p>	<p>Any clothes with large obvious logos No mini-skirts Cargo/combat trousers Trousers with additional external pockets Sports wear Shorts Leggings or any type of tight trouser jeans/denim of any type Trainers (including Vans/Converse), canvas shoes and sandals Hooded tops No “beachwear” including flip-flops No “ugg” style boots</p>



Careers

- Weekly Careers Education in tutor time
- Access to Unifrog
- Exposure to Apprenticeship/Employment/Training providers
- Careers Fair
- Careers Related Learning within subjects
- National Careers Week
- Work Experience
- 1:1 Independent Careers Advice
- UCAS support

